



LP MOTORCYCLE • SLA BATTERY

LTZ12-S (12V 11Ah)

DIN: 50901

19/06/2023

Description

The motor battery LTZ12-S, 12 volt, 11 Ah, is a starter battery with AGM technology. The LTZ12-S is already factory activated (filled and charged) and therefore ready to use at delivery. This lead-acid battery is leak-proof and maintenance free. Can be installed in tilted position up to 90°. The LTZ12-S is a real allrounder and suitable for seasonal use and short distances.

Performance

Rated Voltage	12
Nominal Capacity	11Ah (10hr)
CCA EN	210

Dimensions / Weight

Dimensions	Length	150 mm
	Width	88 mm
	Container Height	110 mm
	Total Height	110 mm
Net. Weight	3.82 Kg	
Weight acid	0.68 Kg	
Terminal	F	
Layout	1	

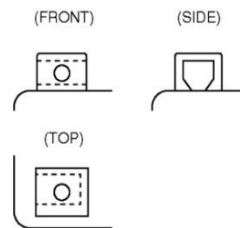
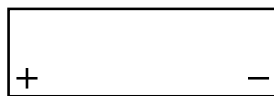


Features

- Absorbent Glass Mat technology
- Advanced starting power
- Excellent vibration resistant
- 100% maintenance free
- Factory activated, ready to use!

Layout

Terminal



(Note) All above information shall be changed without prior notice, Landport Batteries reserves the right to explain and update the latest information.