



LP MOTORCYCLE • AGM BATTERY

# LTX5L-BS (12V 3Ah)

DIN: 50412

01/06/2023

## Description

The motor battery LTX5L-BS, 12 volt, 4 Ah, is a starter battery with AGM technology. The LTX5L-BS is dry pre-charged and comes with a fitting acid pack. This lead-acid battery is, after filling and charging, 100% maintenance free and leak-proof. Can be installed in tilted position up to 45°. The LTX5L-BS is a real allrounder and suitable for seasonal use and short distances.

## Performance

Rated Voltage	12
Nominal Capacity	4Ah (10hr)
CCA EN	80

## Dimensions / Weight

Dimensions	Length	113 mm
	Width	70 mm
	Container Height	105 mm
	Total Height	105 mm
Net. Weight	1.67 Kg	
Weight acid	0.31 Kg	
Terminal	F	
Layout	0	

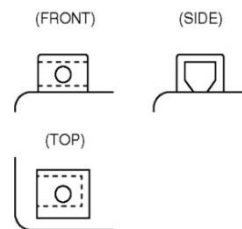
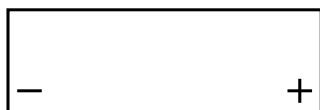
## Features

- Absorbent Glass Mat technology
- Advanced starting power
- Excellent vibration resistant
- 100% maintenance free once activated



## Layout

## Terminal



(Note) All above information shall be changed without prior notice, Landport Batteries reserves the right to explain and update the latest information.